

30 March - 12 May 2018

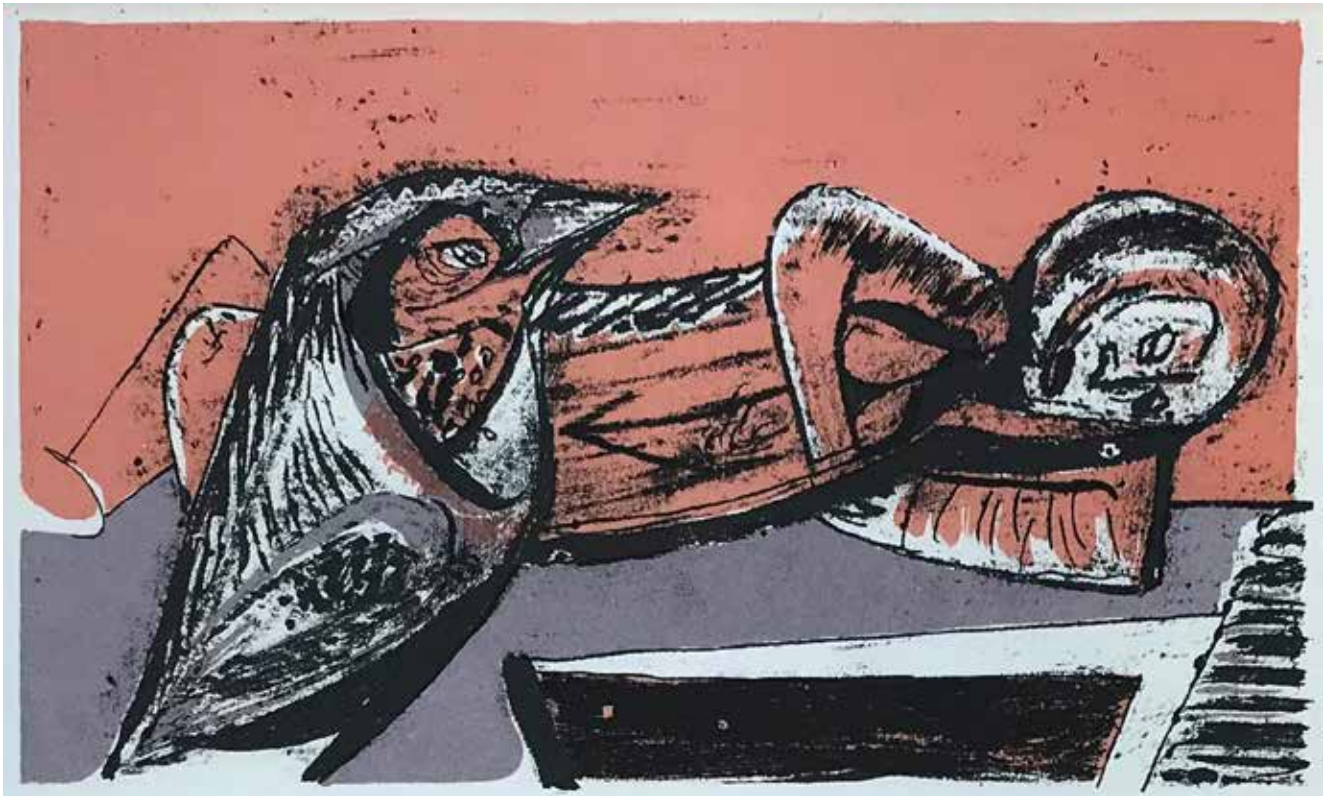
THE ART OF ILLUSTRATION



GALLAGHER & TURNER

30 St Mary's Place, Newcastle upon Tyne, NE1 7PQ

0191 261 4465 gallery@gallagherandturner.co.uk gallagherandturner.co.uk



ROBERT COLQUHOUN
Woman and Bird, 1947

Lithograph

17.7 x 10.8cm (image)

£140 Framed



ROBERT COLQUHOUN
Winged Dog, 1947

Lithograph

17.7 x 10.8cm (image)

£140 Framed



SAM KNOWLES

Elephant

Reduction linocut, variable edition of 7

Signed and numbered

19.5 x 31.5cm (image)

£240 Framed



SAM KNOWLES

Indian Ocean

Reduction linocut, variable edition of 6

Signed and numbered

20.5 x 22.5cm (image)

£240 Framed



SAM KNOWLES

At Sea

Reduction linocut, variable edition of 7

Signed and numbered

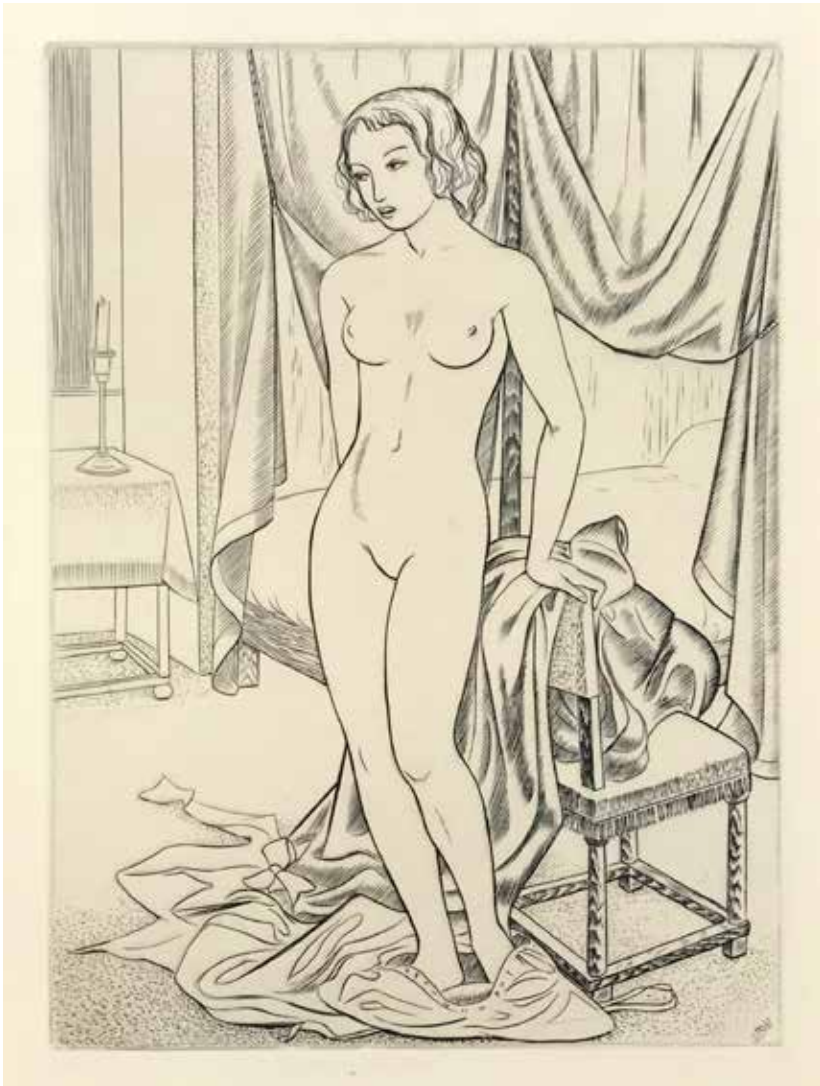
16 x 21cm (image)

£195 Unframed



SHOSON (1874 - 1944)
Cat and Goldfish Bowl
Japanese woodblock
37 x 23cm (image)

£850 Framed



JOHN BUCKLAND WRIGHT

Rosalind, 1937

Engraving

Signed in plate

17 x 13cm (image)

£600 Framed



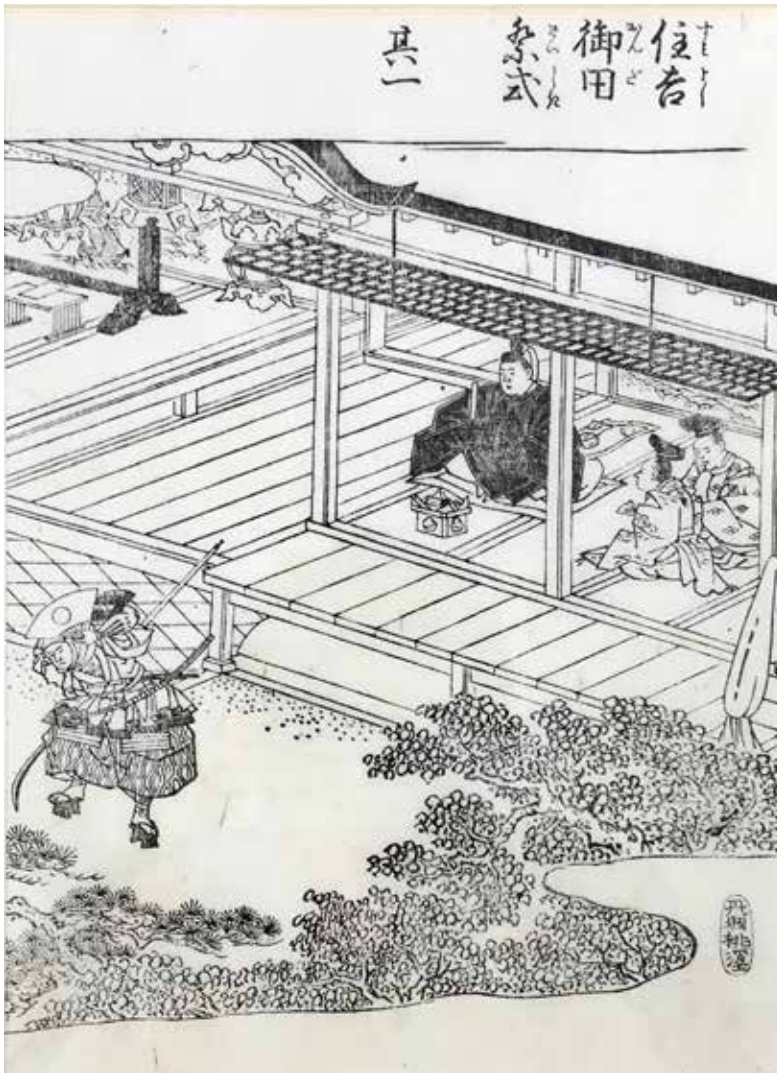
HIROSADA (1820 - 1863)
Kabuki Actor Portrait, 1848
Japanese woodblock
23 x 17cm (image)

£340 Framed



HIROSADA (1820 - 1863)
Kabuki Actor Portrait, 1848
Japanese woodblock
24.1 x 17.8cm (image)

£340 Framed



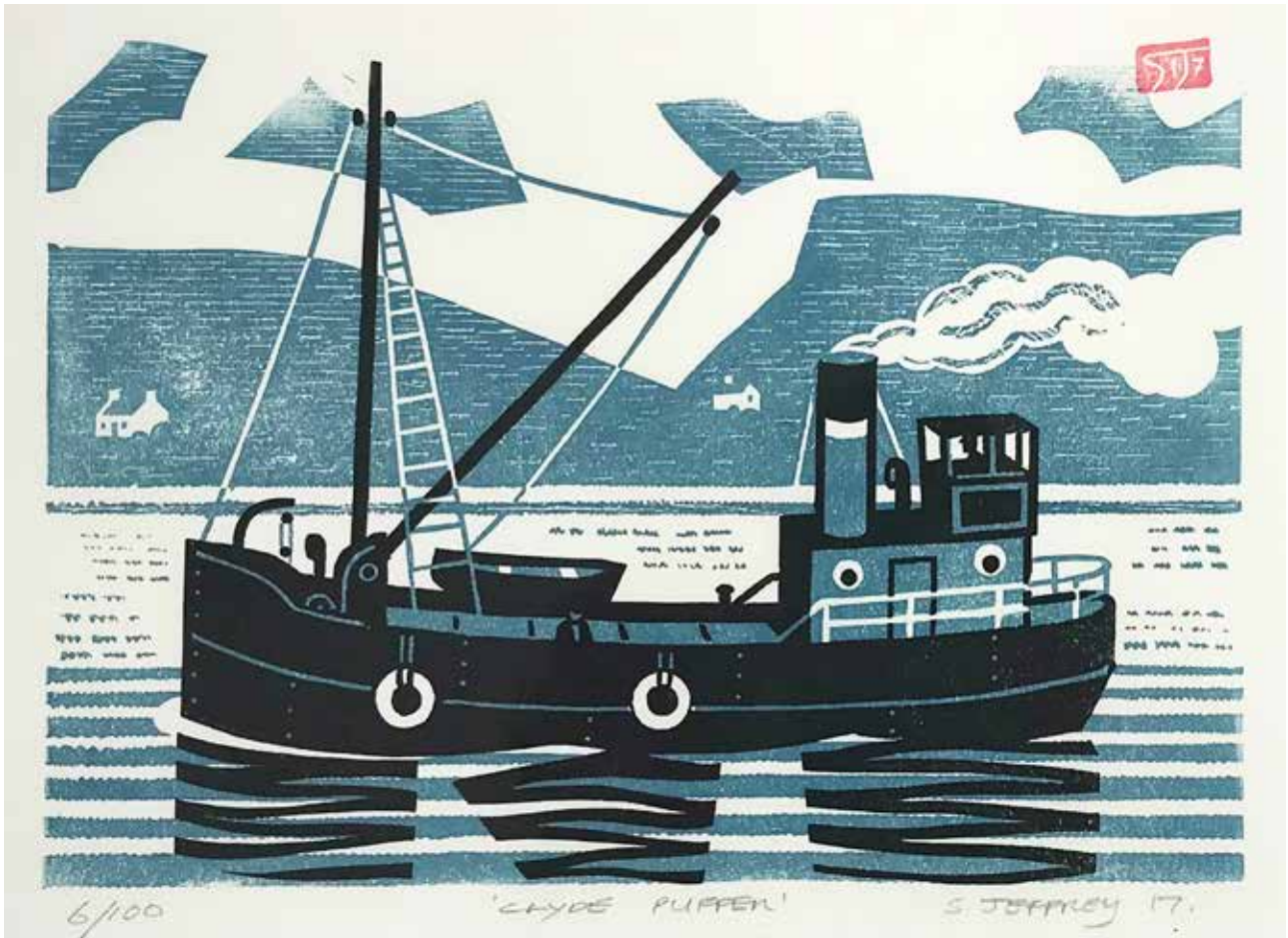
UNNAMED 18th C. ARTIST
100 Views of Edo
Japanese woodblock
20.5 x 15cm (image)

£90 Framed



UNNAMED ARTIST
Men with Fan and Drum
Japanese woodblock
19th Century
15.5 x 11cm (image)

£120 Framed



STEPHEN JEFFREY

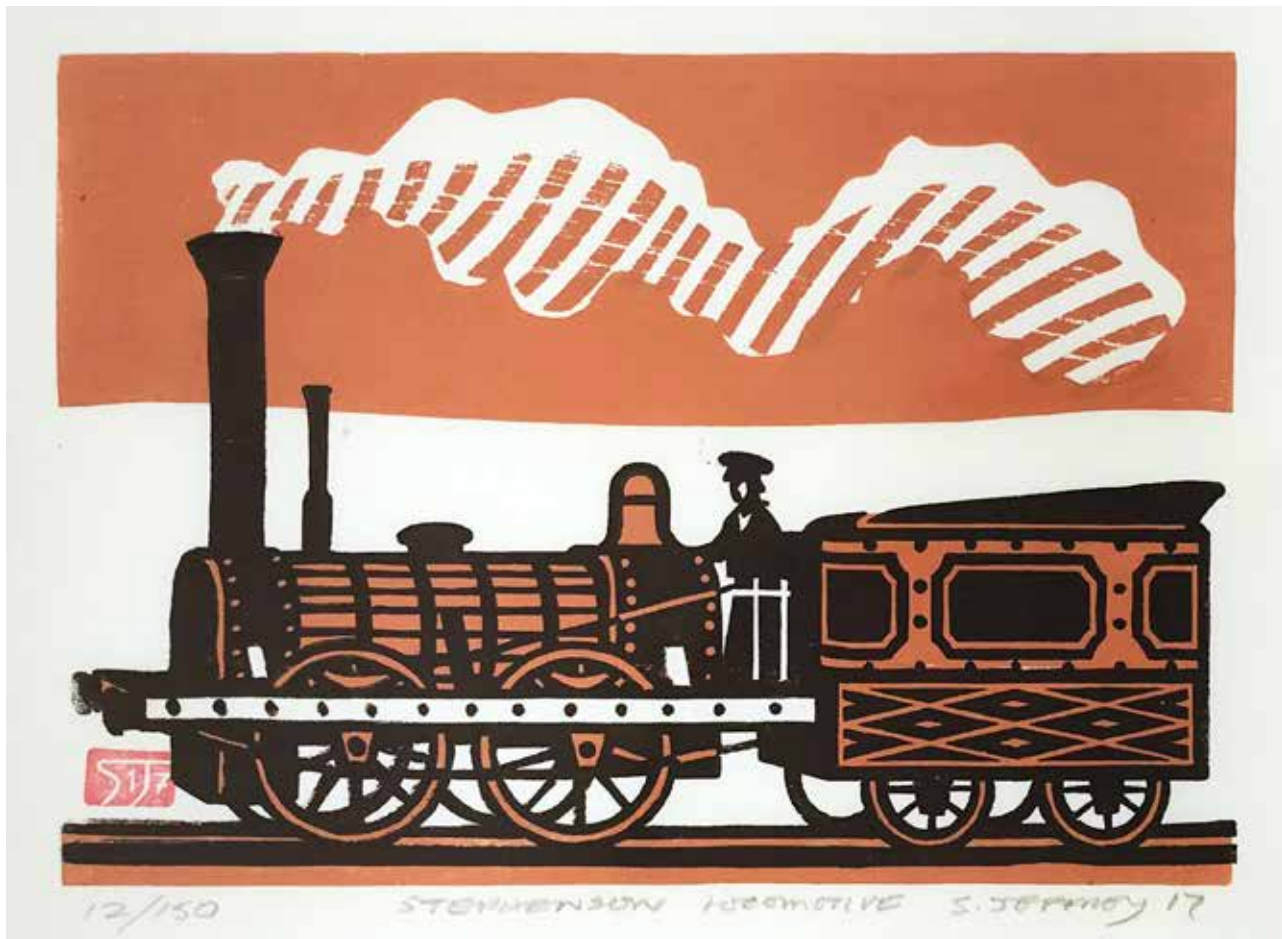
Clyde Puffer

Linocut, variable edition of 100

Signed and numbered

17.5 x 25cm (image)

£140 Framed



STEPHEN JEFFREY

Stephenson Locomotive

Linocut, variable edition of 150

Signed and numbered

14.5 x 20cm (image)

£140 Framed



STEPHEN JEFFREY
Shipbuilding
Linocut, variable ed. of 100
Signed and numbered
36 x 28.5cm (image)

£240 Framed



STEPHEN JEFFREY

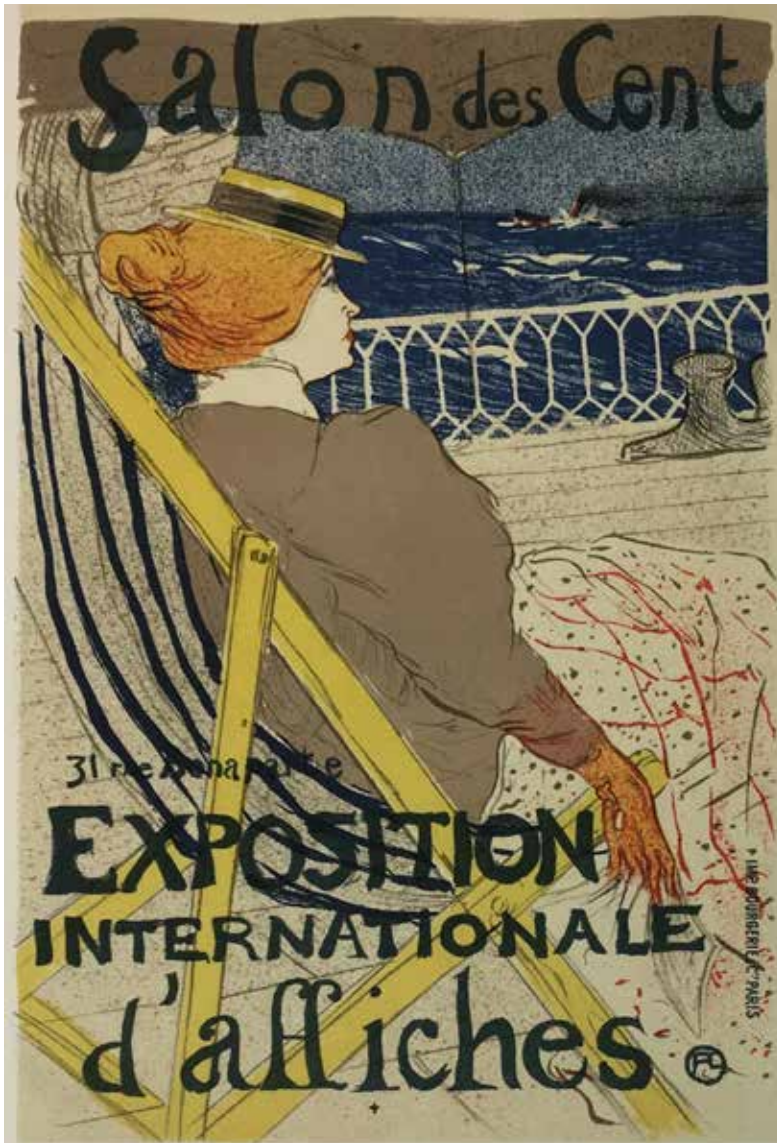
High Level Bridge

Linocut, variable edition of 150

Signed and numbered

15 x 22cm (image)

£140 Framed



HENRI DE
TOULOUSE-LAUTREC
Salon des Cent
Lithograph
31.7 x 24.1 cm (image)
Printed by Atelier Mourlot, 1952

£260 Framed



**HENRI DE
TOULOUSE-LAUTREC**
Confetti
Lithograph
32 x 24.8cm (image)
Printed by Atelier Mourlot, 1952

£260 Framed

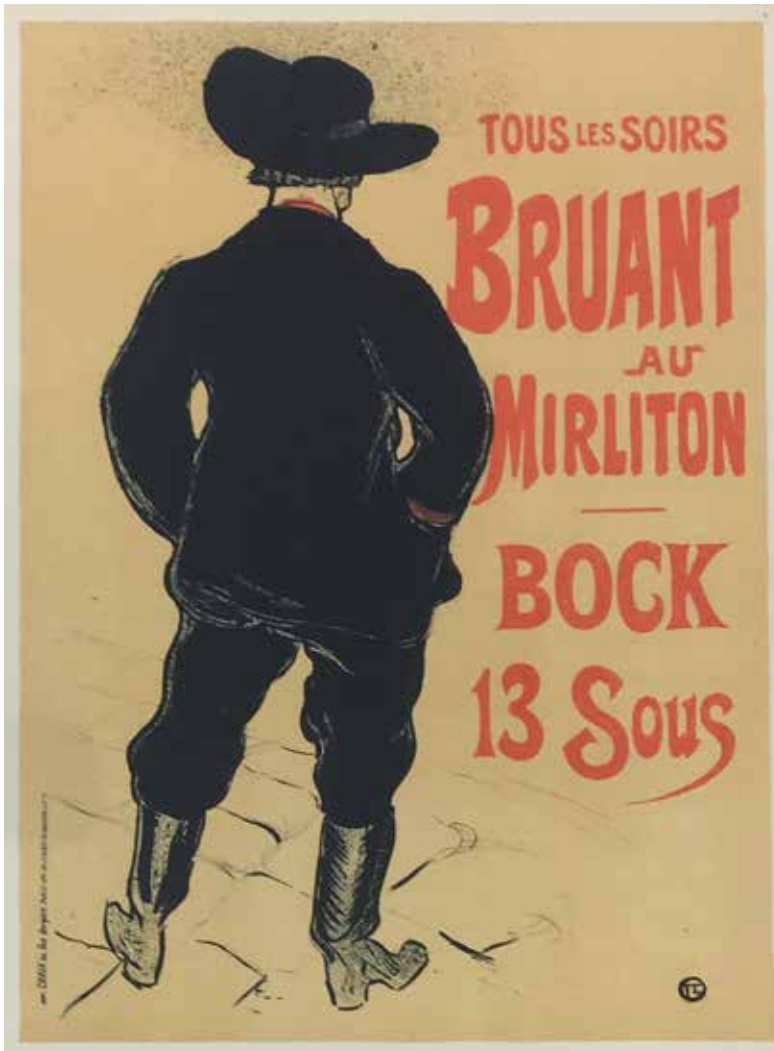


HENRI DE
TOULOUSE-LAUTREC
Ambassadeurs
Lithograph

31.7 x 24.1 cm (image)

Printed by Atelier Mourlot, 1952

£260 Framed



**HENRI DE
TOULOUSE-LAUTREC**
Bruant au Mirliton
Lithograph
31.7 x 24.1 cm (image)
Printed by Atelier Mourlot, 1952

£260 Framed



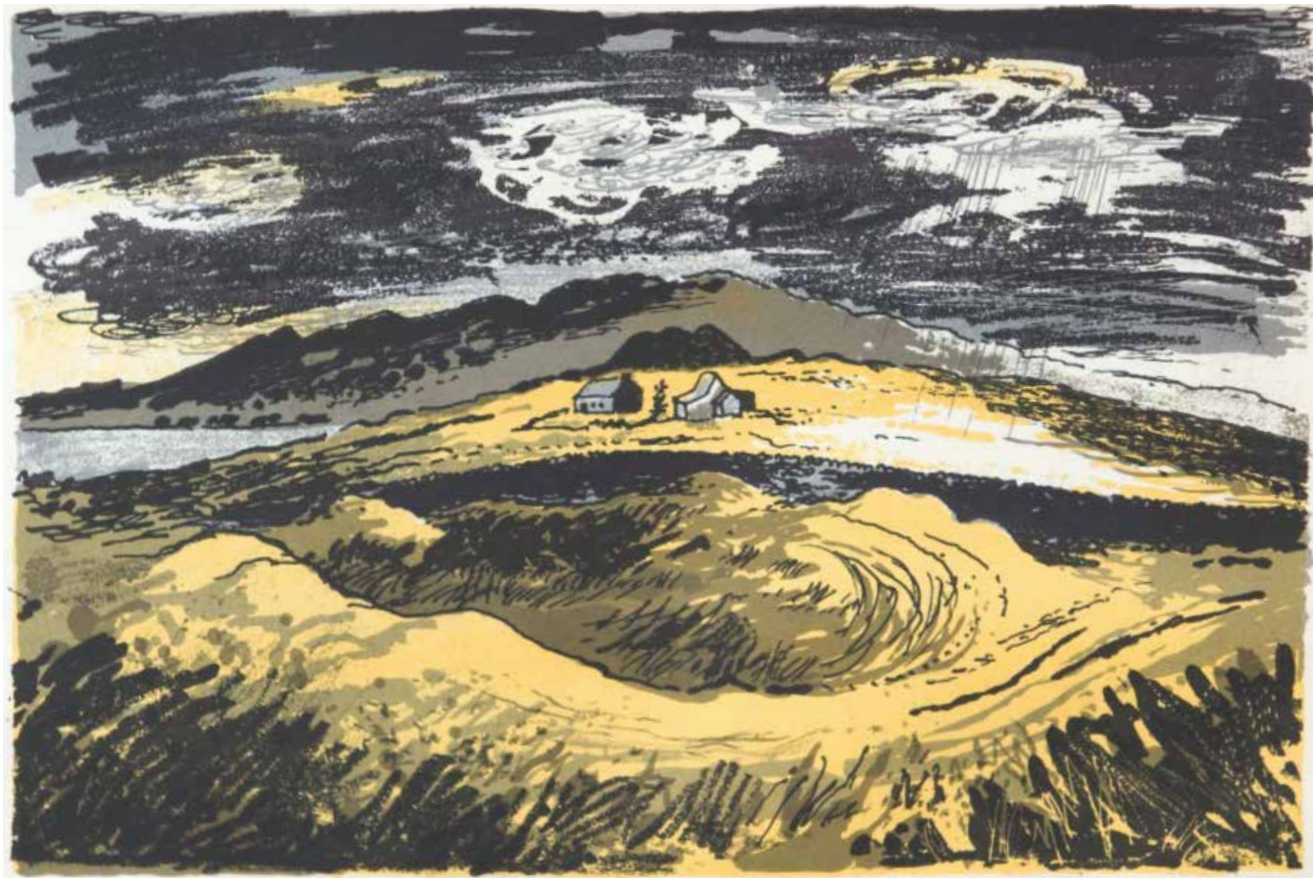
LEON UNDERWOOD
Bemied And Madly
Aspiring Beasts, 1926
Wood engraving
15.9 x 10cm (image)

£160 Framed



LEON UNDERWOOD
I Am Their Music, 1926
Wood engraving
16.7 x 8.5cm (image)

£160 Framed



JOHN PIPER

Tomen-y-Mur and Roman Amphitheatre, North Wales, 1944

Lithograph

18.4 x 12.3cm (image)

£140 Framed



JOHN PIPER
Stonesfield, Oxfordshire, 1944

Lithograph

18.4 x 12.3cm (image)

£140 Framed



JOHN PIPER
Trawsfynydd, Merioneth, 1944

Lithograph

18.4 x 12.3cm (image)

£140 Framed



JOHN NASH
Harvesting, 1946
Lithograph
49.5 x 76cm (image)

£650 Framed

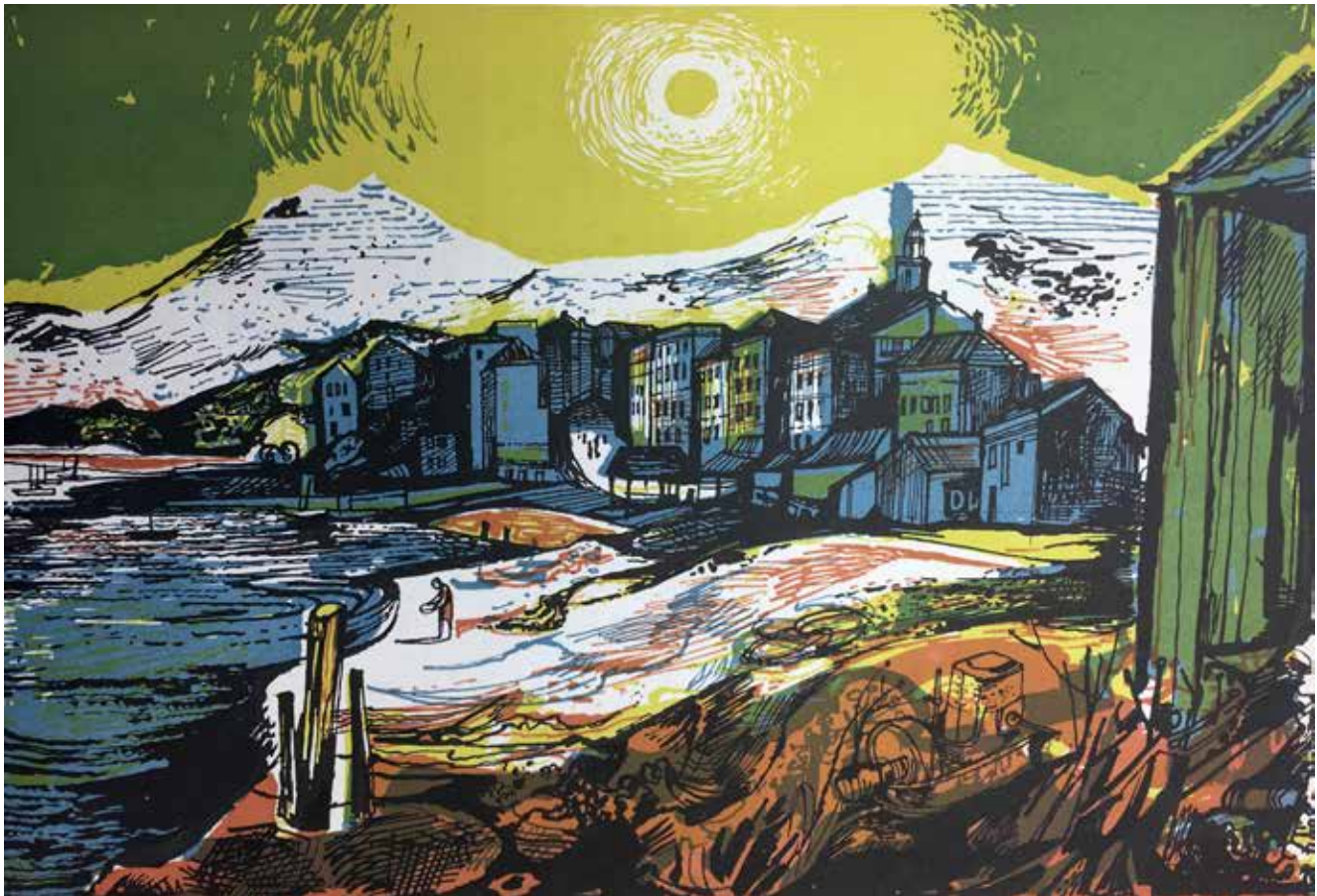


JOHN MINTON
Time Was Away V, 1948

Lithograph

16.4 x 23.3cm (image)

£340 Framed



JOHN MINTON
Time Was Away VII, 1948

Lithograph

16.4 x 23.3cm (image)

£340 Framed



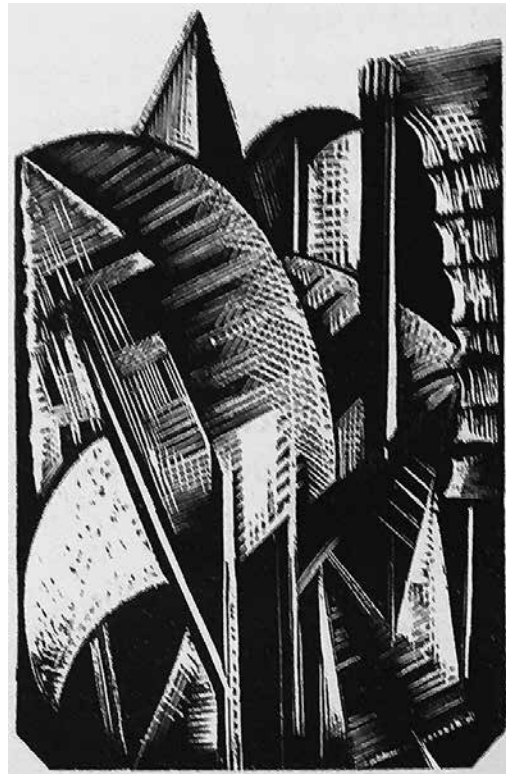
CLARE LEIGHTON
Umbrella Mending
Woodcut, ed. 42/75
Signed and numbered
16.5 x 12cm (image)

£760 Framed



PAUL NASH
Abstract from
'Welchman's Hose', 1925
Wood engraving
3.7 x 3.1cm (image)

£70 Unframed



PAUL NASH
Landscape with Tall
Buildings from
'Welchman's Hose', 1925
Wood engraving
7.5 x 4.7cm (image)

£120 Framed